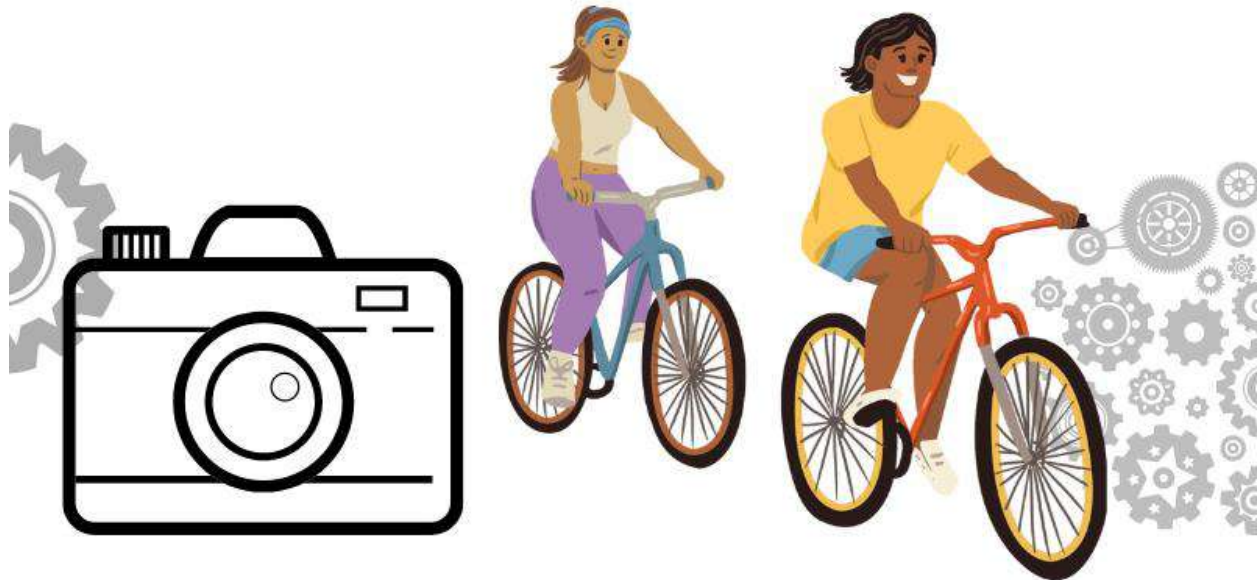


Fuji Serial Number Lookup: Unraveling the Secrets of Your Fuji Camera



Fuji Serial Number Lookup

Spincyclehub.com

Introduction

Have you ever wondered about the story behind your Fuji camera? Perhaps you've inherited one from a family member, stumbled upon a vintage model in a thrift store, or are simply curious about the manufacturing details of your beloved photography companion. Well, you're in luck! In this article, we'll dive into the fascinating world of Fuji serial number lookup and explore how these unique identifiers can unveil valuable information about your camera's origins, production date, and even potential quirks. So grab your favorite lens and join us on this exciting journey of discovery!

What is a Serial Number and Why Does It Matter?

The Basics of Serial Numbers

When it comes to consumer electronics like cameras, a serial number serves as a unique identifier assigned to each individual unit during the manufacturing process. Think of it as your camera's personal ID card. This number distinguishes your camera from others, making it easier to track its history and verify its authenticity.

The Importance of Serial Numbers

Serial numbers play a crucial role in various aspects of camera ownership. Firstly, they provide a means of identifying stolen or lost cameras, aiding law enforcement in recovering and returning them to their rightful owners. Additionally, serial numbers are vital for warranty purposes, allowing manufacturers to validate the authenticity and age of a product when providing service or repairs.

Decoding Fuji Serial Numbers

Fuji's Serial Number Format

Fuji employs a specific format for its serial numbers, typically consisting of a combination of letters and numbers. While the format may vary across different camera models and generations, understanding the general structure can help unravel the secrets hidden within.

Breaking Down the Serial Number

Let's take a closer look at an example serial number, such as "FJ1234567." The first two characters, "FJ," often represent the manufacturing location or factory code. The following digits, "1234567," usually denote the camera's production sequence number. By analyzing this sequence, one can determine the relative age of their camera compared to others produced around the same time.

Fuji Serial Number Lookup Tools Online Serial Number Databases

Fortunately, several online resources are available to help you decode and analyze your Fuji camera's serial number. Websites like [CameraQuest](#) and CollectiBlend provide comprehensive databases where you can enter your serial number and retrieve valuable information about your camera model, production year, and sometimes even additional historical details.

Manufacturer Support

In some cases, reaching out directly to Fuji's customer support can also provide insights into your camera's origin and manufacturing details. They may have access to internal records or documentation that can shed light on your camera's journey from the factory to your hands.

Unveiling the Secrets Behind Your Fuji Camera Production Date and Batch Information

By deciphering your camera's serial number, you can uncover its production date and potentially identify the batch or series it belongs to. This information not only satisfies curiosity but also assists in understanding the technological advancements or changes implemented in subsequent camera models.

Discovering Special Editions and Limited Runs

Serial number lookup can also reveal if your Fuji camera is part of a special edition or limited run. Manufacturers often designate specific ranges of serial numbers for such releases, signifying their uniqueness and desirability among photography enthusiasts.



Fuji Serial Number Lookup

Spincyclehub.com

Conclusion

Your Fuji camera's serial number holds more significance than you might have initially thought. It serves as a gateway to the past, revealing the intricate details of its manufacturing journey and providing valuable insights into its age, production batch, and potential rarity. Whether you're a seasoned Fuji user or a curious newcomer, taking the time to explore your camera's serial number can deepen your appreciation for its history and add an extra layer of connection to your [photographic endeavors](#).

FAQs (Frequently Asked Questions)

Q1: Can I find the serial number of my Fuji camera on the camera body itself?

Yes, most Fuji cameras have the serial number printed on the camera body. Look for a small engraved or printed label usually located near the tripod mount or inside the battery compartment.

Q2: Are serial numbers unique to each individual camera model?

Serial numbers are unique to each individual camera unit, regardless of the model. However, different models may follow different numbering patterns or formats.

Q3: Can I determine the exact production date of my Fuji camera using its serial number?

While serial numbers can provide a general idea of a camera's production date, they might not always reveal the exact manufacturing day. Production schedules, delays, and other factors can influence the precise date.

Q4: I bought a secondhand Fuji camera without a warranty. Can I still use the serial number for support purposes?

Yes, even without a warranty, manufacturers can still provide support and repairs for cameras based on their serial numbers. However, it's always advisable to check with the manufacturer or authorized service centers for specific details.

Q5: Can serial numbers help identify counterfeit Fuji cameras?

Serial numbers are one of the many factors that can help identify counterfeit cameras. However, due to the sophistication of counterfeiters, relying solely on the serial number is not foolproof. It's essential to purchase from authorized dealers and verify other authenticity markers as well.

Remember, a Fuji camera's serial number holds the key to its hidden stories. So, take a moment to decode and explore, and you might uncover fascinating details about your cherished photography companion. Happy shooting!

You May Also Like

- [Shimano Altus vs. Deore: Battle of the Bike Components](#)
- [Brakes on Bullhorn Handlebars: Enhancing Safety and Control](#)
- [Bulge in Bike Tire : A Bumpy Ride or a Serious Concern?](#)
- [60 vs 120 TPI: Unraveling the Thread Count Mystery](#)